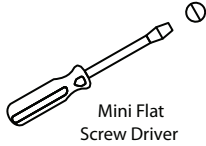
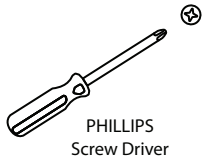
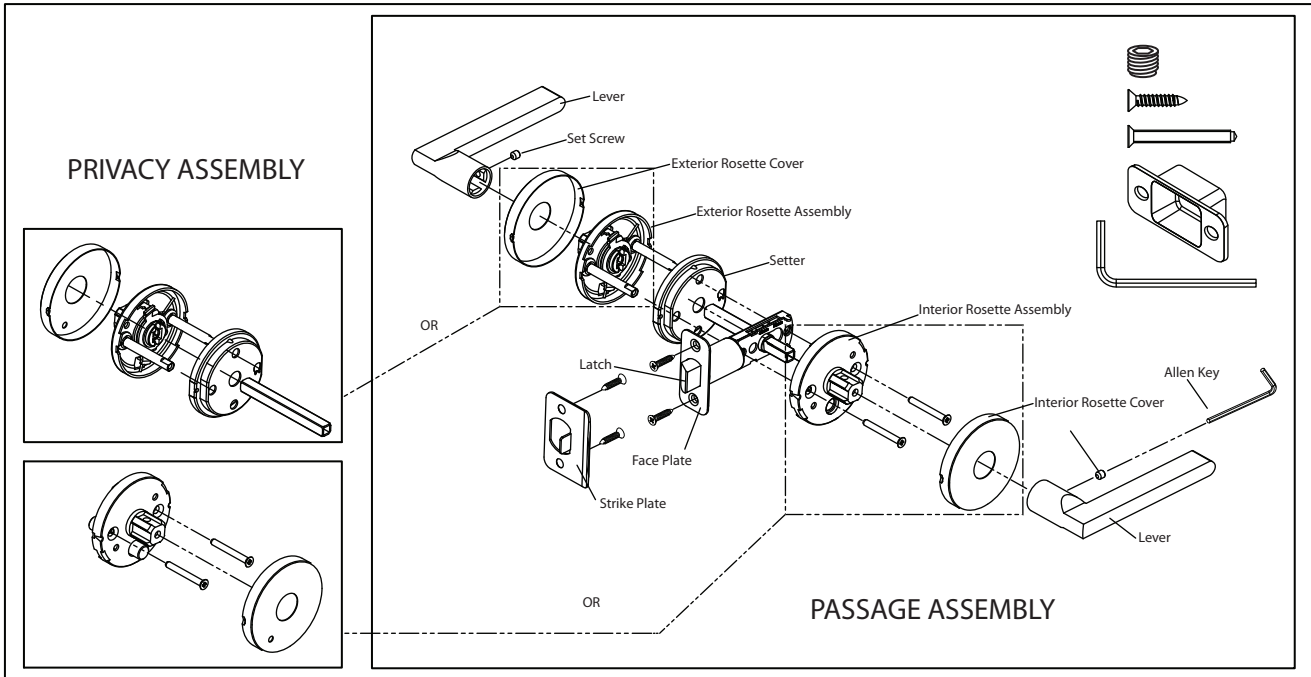


CAUTION: Use of manual tools recommended. When using power tools, adjust to lowest torque setting.

## TOOLS NEEDED

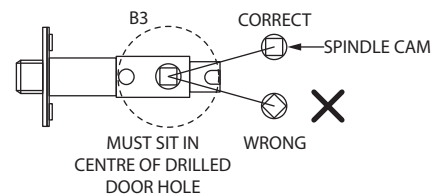
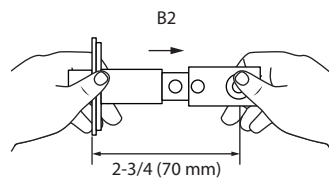
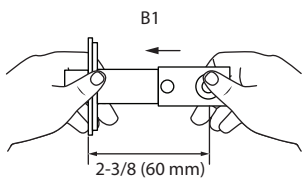


## IN THE BOX



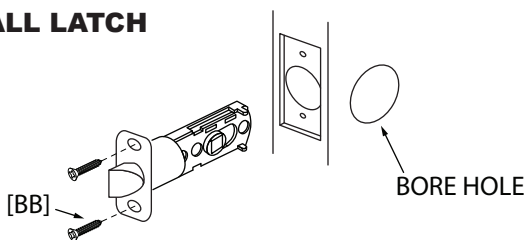
## INSTRUCTIONS

### STEP 1: ADJUST THE BACKSET



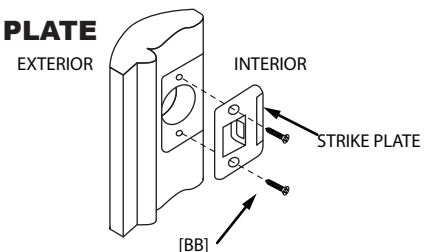
The backset is the distance from the door edge to the center of the spindle cam. The spindle cam must sit straight [B3] and at the center of the bore hole to install the lever. The two most common backset measurements are 2-3/8" [60mm] or 2-3/4" [70mm]. To change the backset from 2-3/8" [60mm] [B1] to 2-3/4" [70mm] [B2] pull the spindle cam away from the faceplate. To reset to 2-3/8 (60mm) push spindle towards the face plate.

### STEP 2: INSTALL LATCH



Secure the latch to the door edge using screws [BB]  
**Note:** The bevel (curved side) of the latch should be facing the door jamb when the door closes.

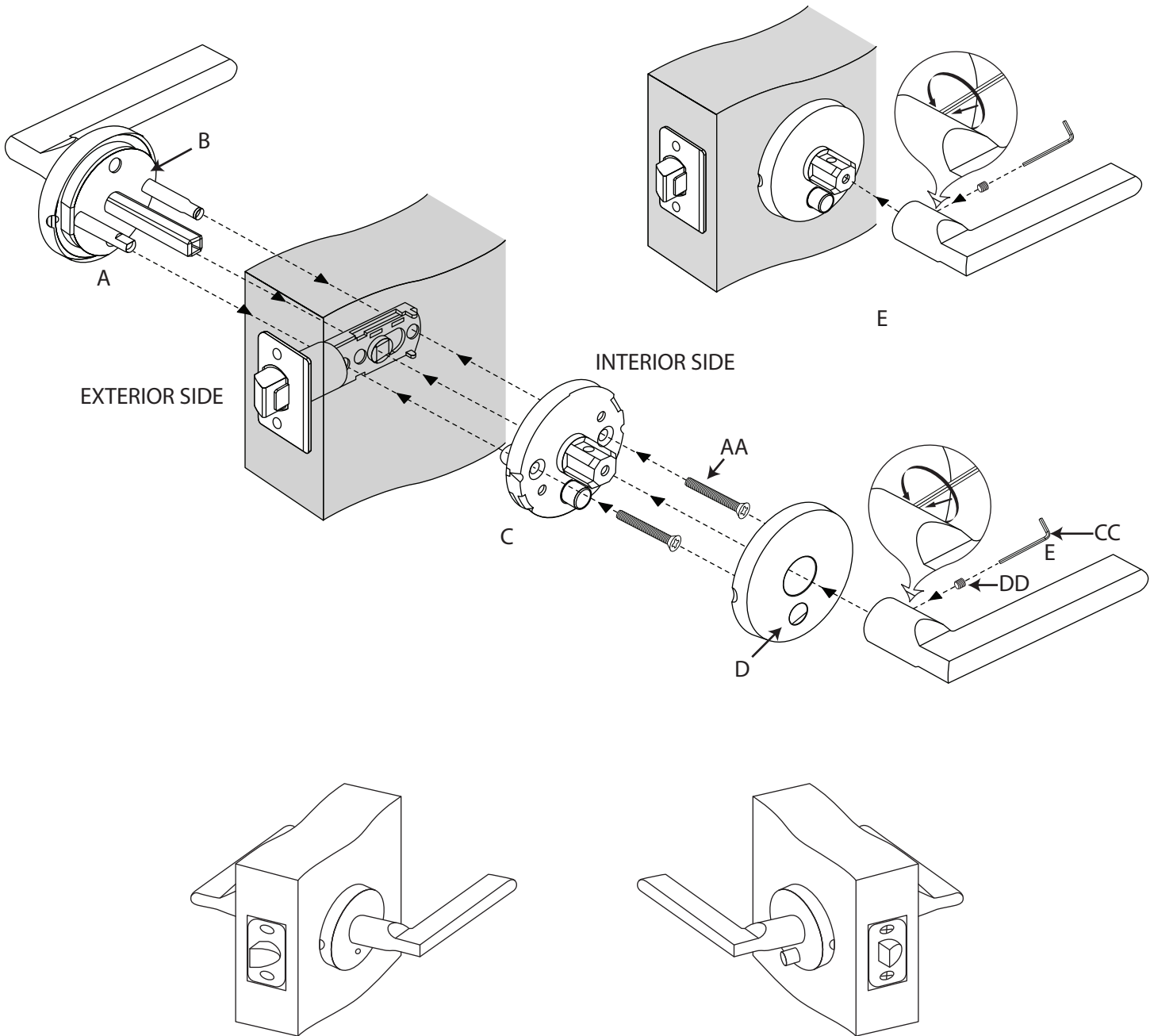
### STEP 3: INSTALL STRIKE PLATE



Secure the strike plate to the door jamb using screws [BB]

**STEP 4:  
INSTALL LOCKSET**

- A. Install exterior lock assembly inserting square spindles and posts through latch.  
Note: For privacy function, the emergency release hole should be positioned below the lever. The lever direction may need to be switched. Refer to door prep diagram #3.
- B. Ensure that the setter is installed.
- C. Attach the interior lock assembly to the exterior assembly using the mounting screws [AA].  
Note: For privacy functions, ensure that the lock button is below the lever and aligns with the emergency release hole on the exterior side
- D. Attach the interior rosette to lock mechanism. Ensure that the pin/slot/notch is positioned sideways.
- E. Attach the interior lever with the set screws [DD], using the Allen Key [CC].



**Note: To ensure correct alignment of the lever, tighten the mounting screws on the interior lock mechanism while holding the exterior lever upwards.**