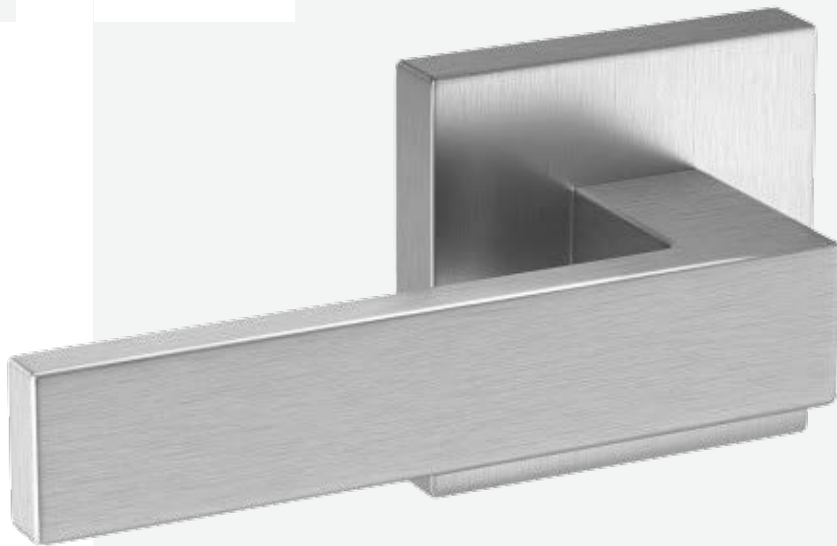


·Embelle[®]



Veroa Lever Handle
4500 series

Veroa Lever Handle

4500 series



SPECIFICATIONS

Lever length	4.96"
Lever projection	2.55"
Lever clearance	1.76"
Rosette height	2.55"
Rosette width	2.55"
Rosette depth	0.55"
Face plate	1" x 2-1/4" radius
Concealed screws	Yes
Handing	Reversible for left and right hand use
Area	Interior
Doors	Wooden
ANSI	meets or exceeds ANSI A156.2

FINISHES

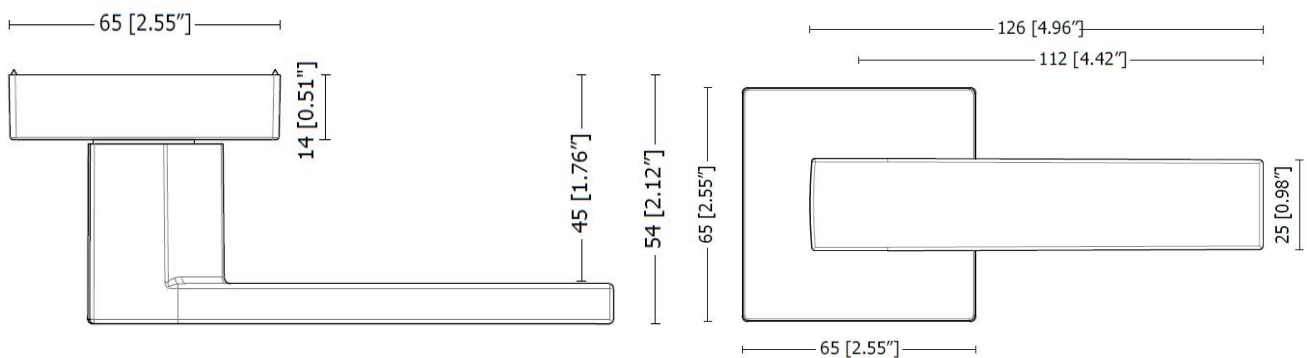
US4 Satin Brass (SB)

US19 Dull Black (DB)

US15 Satin Nickel (SN)

US26 Bright Chrome (BC)

Additional finishes available upon request



Privacy (R)
Bed & Bath



Passage (A)
Hall & Closet



Dummy (U)
Non-Functional

Embelle®